

Getting Started with ArchiCAD 19

GRAPHISOFT®
A NEMETSCHEK COMPANY

GRAPHISOFT®

Visit the GRAPHISOFT website at <http://www.graphisoft.com> for local distributor and product availability information.

Getting Started with ArchiCAD 19

Copyright © 2015 by GRAPHISOFT, all rights reserved. Reproduction, paraphrasing or translation without express prior written permission is strictly prohibited.

Trademarks

ArchiCAD® is a registered trademark of GRAPHISOFT.
All other trademarks are the property of their respective holders.

Contents

The ArchiCAD 19 Package	5
<i>ArchiCAD 19</i>	5
<i>GRAPHISOFT BIM Server for ArchiCAD 19</i>	5
ArchiCAD 19	6
Hardware/Software Requirements	6
Install ArchiCAD 19	8
<i>Start-up Presentation</i>	8
<i>Start Installation Wizard</i>	8
<i>Install ArchiCAD Using Basic Configuration (Default)</i>	9
<i>Install ArchiCAD as BIM Manager</i>	10
<i>Program Folder Selection</i>	11
<i>Choose Setup Type</i>	11
<i>Start Menu Location (Windows 7 Only)</i>	11
<i>Installation Process</i>	12
<i>Shortcuts</i>	12
<i>Work Environment Profiles</i>	12
<i>Complete Installation</i>	13
ArchiCAD License Protection Key	13
<i>If You Do Not Have A Protection Key</i>	14
Choose and Configure License Type	15
Create Installation Package for Predefined Company Standards	16
<i>Introduction</i>	16
<i>Custom Installation Package: Step by Step</i>	17
Using a CodeMeter Server	25
Add/Repair (Reinstalling ArchiCAD)	30

Uninstall ArchiCAD	31
<i>Silent Uninstall</i>	<i>31</i>
BIM Server for ArchiCAD 19	33
Hardware/Software Requirements	33
Migrating the BIM Server	35
Installation of BIM Server	36
Uninstall BIM Server	40
Licensing and Activation of BIM Server	41
<i>Upgrade BIM Server to BIMcloud</i>	<i>41</i>
Tools and Utilities	42
Updates	44
<i>For ArchiCAD and ArchiCAD Library</i>	<i>44</i>
<i>For BIM Server</i>	<i>44</i>
Compatibility Information	45
<i>Opening ArchiCAD Files</i>	<i>45</i>
<i>Saving Project Files</i>	<i>46</i>
<i>Plotter and Digitizer Support</i>	<i>46</i>
Notes	47

The ArchiCAD 19 Package

ArchiCAD 19

ArchiCAD is a powerful modeling application which enables architects to design buildings more productively, based on the Virtual Building™ approach. ArchiCAD allows architects to focus on design, either alone or in Teamwork, while also exchanging data smoothly with consultants and professionals in other fields.

Install ArchiCAD 19 if you need to work in ArchiCAD, either in solo mode or as a member of a Teamwork project.

GRAPHISOFT BIM Server for ArchiCAD 19

The GRAPHISOFT BIM Server is a server application necessary to support Teamwork, a client-server technology that enables fast, simultaneous access to projects for multiple clients. The GRAPHISOFT BIM Server is connected through the network to several ArchiCADs, which are the clients in this system.

Each installation process is described in detail in this booklet.

ArchiCAD 19

Hardware/Software Requirements

Internet

Fast Internet access is needed for connecting to BIM Server in a remote location and to download updates for ArchiCAD 19.

Protection Key

You will need an ArchiCAD 19 CodeMeter hardware key or CodeMeter Act software protection key to use the full commercial version of ArchiCAD 19.

See also [“ArchiCAD License Protection Key” on page 13.](#)

Recommended Operating Systems for ArchiCAD 19

- Windows 8.1 (64-bit version)
- Windows 8 (64-bit version)
- Windows 7 (64-bit version)
- Mac OS X 10.10 Yosemite
- Mac OS X 10.9 Mavericks

Notes on older systems

- Mac OS X 10.8 Mountain Lion is compatible but not tested by GRAPHISOFT.
- Mac OS X 10.6 Snow Leopard and Mac OS X 10.7 Lion are *not* compatible (ArchiCAD cannot be installed).
- Windows Vista is *not* compatible (ArchiCAD cannot be installed).
- Windows XP is *not* compatible (ArchiCAD cannot be installed).

Recommended Hardware

- Processor: 64-bit processor with four or more cores.
- RAM: For complex, detailed models 16 GB or more may be required.
- Hard disk space: Installing ArchiCAD on an SSD (or Fusion) drive is recommended; 5 GB free disk space is required for the installation, 10 GB or more is required per active project.
- Graphics card: Dedicated Open GL 2.0 compatible graphics card with on board memory of 1024 MB or more is recommended to fully exploit hardware acceleration capabilities.

You can find a list of recommended video cards at:
<http://helpcenter.graphisoft.com/technotes/video-cards>.

- Display: A resolution of 1440 x 900 or higher is recommended.

Minimum Hardware

- Processor: 64-bit processor with two cores.
- RAM: 4 GB.
- Hard disk space: 5 GB or more is required for the installation.
- Graphics card: Open GL 2.0 compatible graphics card.
- Display: A resolution of 1366 x 768 or higher is required.

Other Software

Java 8 or later is required.

For details, see <http://www.graphisoft.com/Java>.

Note: ArchiCAD installer will automatically install Java 8, if it is are not already present on your computer.

Optional Hardware Peripherals

All major plotter, printers and digitizers can be used with ArchiCAD.

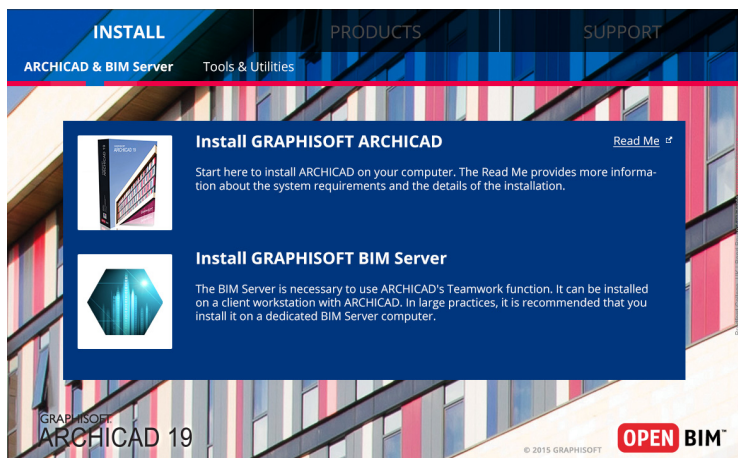
Install ArchiCAD 19

Insert the ArchiCAD DVD into your computer's DVD-ROM drive.

Start-up Presentation

A start-up presentation will be launched, giving you a short visual introduction to the capabilities of ArchiCAD.

If the start-up presentation is not launched automatically on Windows, double-click on the "Setup" application in the DVD root directory.



Start Installation Wizard

- **On Windows:** Click on **Install GRAPHISOFT ArchiCAD 19** in the menu to start the ArchiCAD Installation Wizard.
 - The installer will first check your Java environment. ArchiCAD installer will automatically install Java 8 if it is not present on your computer.

- **On Mac:** The ArchiCAD volume will be mounted on your desktop. Open this volume and click the “ArchiCAD 19 Installer” icon to begin the start-up presentation.
Click on **Install GRAPHISOFT ArchiCAD 19** in the menu to start the Installation Wizard.

There are two ways to proceed in the ArchiCAD 19 Installation Wizard:

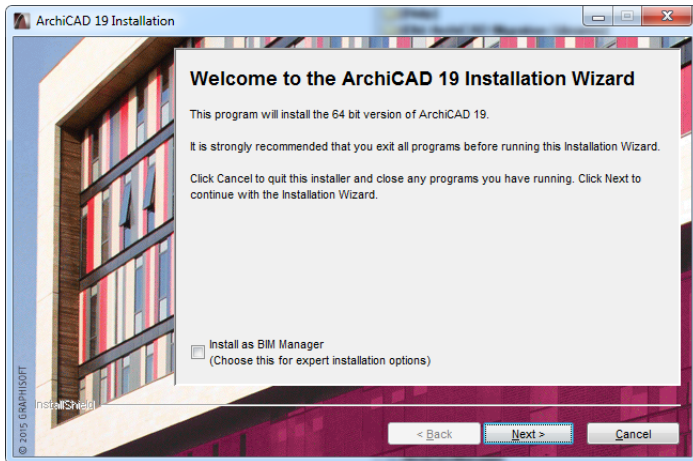
- Install as a regular user, using the default, basic installation process.
- Install as BIM Manager, using additional configuration options.

Both processes are described below.

Install ArchiCAD Using Basic Configuration (Default)

On the Welcome screen of the Installation Wizard:

- 1) Click **Next** to enter the basic Installation Wizard.



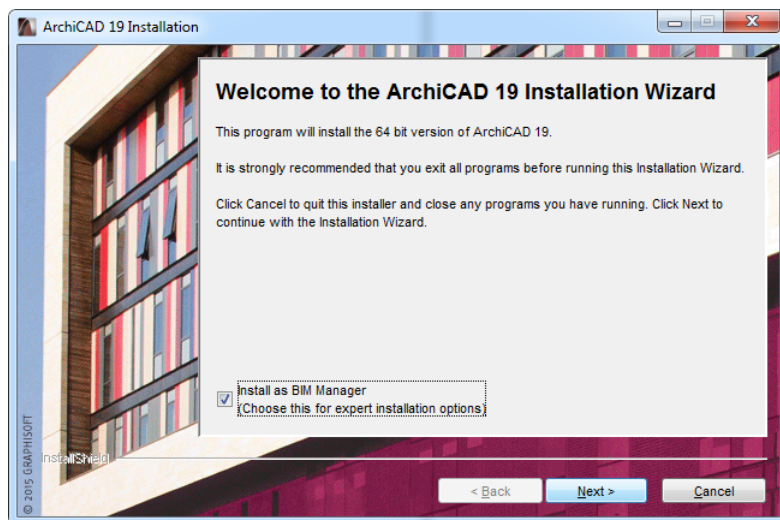
- 2) On the following screen, accept the license agreement.
- 3) Click **Next** again to skip to your next step, which is Program Folder Selection.

See [“Program Folder Selection” on page 11.](#)

Install ArchiCAD as BIM Manager

On the Welcome screen of the Installation Wizard:

- 1) Check the **Install as BIM Manager** checkbox at the bottom left of the Welcome screen. If you check this box, the screens of the Installation Wizard will include the following additional options:
 - Registration with a serial number for EDU or Trial versions, as well as regular protection key;
 - Installation package creation.



- 2) Click **Next**.
- 3) On the next screen (available for BIM Managers only), enter the type of your protection key, or your serial number.

For details, see [“Choose and Configure License Type” on page 15](#).

- 4) Click **Next** to proceed to Program Folder Selection.

Program Folder Selection

After accepting the license agreement, define a location on your computer’s hard drive for installing ArchiCAD 19.

Choose Setup Type

Choose one of the following:

- The **Typical** option installs all components of ArchiCAD 19. It is recommended to use this option when first installing ArchiCAD.
- The **Custom** option installs only the selected parts of the full ArchiCAD package. Choose **Custom** only if you are experienced in installing and using ArchiCAD.

If you are a BIM Manager:

- A third option, **Installation Package Creation** is also available. Choose this only if you have already configured and saved ArchiCAD defaults in a separate folder.

See details at [“Create Installation Package for Predefined Company Standards” on page 16](#).

Start Menu Location (Windows 7 Only)

Define the Program Folder (default folder: GRAPHISOFT) in which to place the “ArchiCAD 19” menu.

Installation Process

After viewing the summary of your installation choices, click Install to begin the installation process.

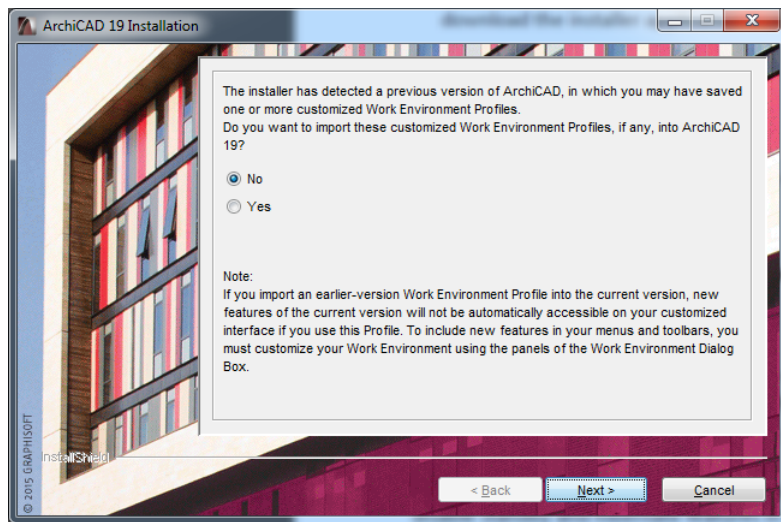
Shortcuts

As part of the installation process, you can create an “ArchiCAD 19” Desktop shortcut.

On Mac, you can also create a Dock icon.

Work Environment Profiles

As part of the installation process, if the installer detects an earlier version of ArchiCAD on your machine, you will have the option of importing any customized Work Environment Profiles from projects in versions ArchiCAD 9 through 18.



Complete Installation

Click **Finish** to complete the installation process.

After installing ArchiCAD, restart your computer.

ArchiCAD License Protection Key

To use the commercial version of ArchiCAD, you must have either a Hardware or Software Key containing an ArchiCAD license.

- The Hardware Key is a physical CodeMeter keyplug.
- The Software Key is a software-based license key available to you online.

Start ArchiCAD

When you start ArchiCAD, the program automatically checks to see if you have a license available. If so, you are ready to work.

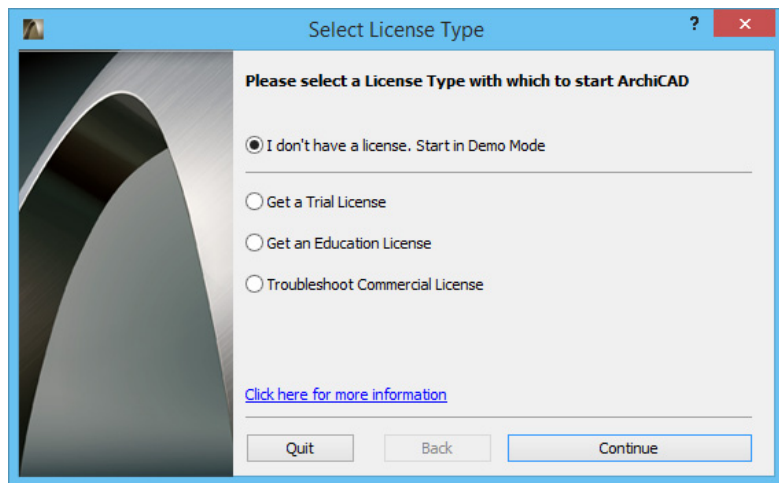
To update, download and otherwise manage your license keys, use the License Manager Tool, available at

<http://www.graphisoft.com/downloads/licensing/>.

If You Do Not Have A Protection Key

After installing ArchiCAD, start the program.

If the program finds that you do not have an available license, an appearing dialog box will help you with the next step.



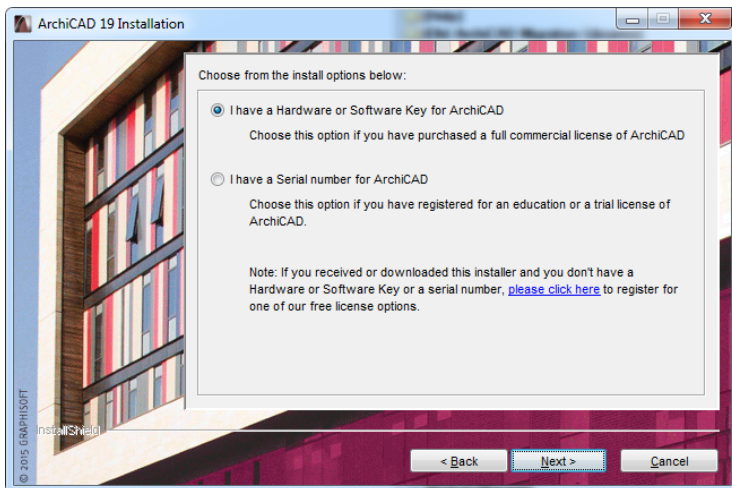
- You can continue in Demo Mode.
- You can register for an Education or Trial license.
- If you have purchased a commercial license but it has not been activated or is unavailable, click **Troubleshoot Commercial License** to find out what to do.

Choose and Configure License Type

This screen of the ArchiCAD 19 Installation Wizard is available only if you checked the **Install as BIM Manager** option on the Wizard's welcome screen.

See *[“Install ArchiCAD as BIM Manager” on page 10.](#)*

Click the option that corresponds to your license type:



- **Hardware or Software Key** (for full commercial ArchiCAD license).
- **Serial Number** (for Education and Trial Licenses).

If you have an Education or Trial license, you will be asked to provide your user ID and serial number.

For information about License Types, see <http://helpcenter.graphisoft.com/technotes/licensing/archicad-license-types/>.

See also *[“ArchiCAD License Protection Key” on page 13.](#)*

Create Installation Package for Predefined Company Standards

This option of the ArchiCAD 19 Installation Wizard is available only if you checked the **Install as BIM Manager** option on the Wizard's welcome screen.

See [*"Install ArchiCAD as BIM Manager" on page 10.*](#)

Introduction

With a Commercial and certain Education licenses, it is possible to create a custom installation package that contains all the company standard environment settings, such as:

- Work environment settings;
- DXF/DWG Translators or IFC Translators used by default;
- Project templates.

Distributing this installation package in the office makes it possible for all associates to have a copy of ArchiCAD customized according to the company standards determined by the BIM Manager.

Note for Educational Institutions: If your ArchiCAD license is registered to an educational institution, you can use the Installation Package Creation process to create a recorded installation and simplify the installation of multiple identical copies of the program - even if you wish to use factory defaults instead of custom-defined settings.

To do this, you (the BIM Manager) must first install ArchiCAD on your own computer, following the standard installation process, and configuring the program according to company standards, following the steps below. Then you will quit and re-install the program on a server (or different machine). This time, you will choose a special installation option which automatically records your installation process and creates an install package: a single executable application file to be launched on each end user's machine.

Custom Installation Package: Step by Step

To create a custom installation package, follow these steps:

- 1) Install ArchiCAD 19 onto your own computer following the steps under “Standard Installation”. Choose the “Typical” Setup.
- 2) After starting ArchiCAD, use **Options > Work Environment** dialog boxes to set up your company standard Work Environment settings. Most such options are found in three dialog boxes of Company Standard Schemes: **Data Safety & Integrity**; **Network and Update**; and **Special Folders**. Once you have set these options, you can save these settings in schemes, then save the schemes in a company-default profile. To save a profile, go to **Options > Work Environment > Work Environment Profiles**.

Note: If you create new Work Environment schemes, and if you don’t want your Install Package to include the default ones created by the regular installation, then you should first copy the content of the **Work Environment** folder to the **Defaults/ArchiCAD/WorkEnvironment** folder. Then delete the unneeded schemes from this latter folder.

Location of Work Environment Folder

- Windows 7 or 8:
 - Users\<Username>\AppData\Roaming\Graphisoft\ArchiCAD-64 xx.0.0 yyy R1
- Mac:
 - ~/Library/Preferences/Graphisoft/AC-64 xx.0.0 yyy v1

where xx stands for the version number of ArchiCAD and yyy is the language version of ArchiCAD.

- 3) Create and save any number of template files. Template files include libraries loaded through Library Manager (e.g. “Office Standard Library”). Templates can also include Project Preferences (e.g. Working Units, Zone calculation preferences), and such items as Master Layouts, Project Info, placed elements (e.g. Elevation markers, entire buildings).

- 4) Use the **DXF-DWG Translation Setup** dialog box (**File > File Special > DXF-DWG Translation Setup**), to set up DXF/DWG Translators and save them to a shared folder on a server that is accessible to all users. (In this case, a DXF-DWG TranslatorList.xml file is created, which is a list of references to these translators.) You can also create local translators that you want to install on the hard disk of each user.
- 5) Use the **IFC Translation Setup** dialog box (**File > File Special > IFC2x3 > IFC Translation Setup**) to set up IFC Translators and save them to a shared folder on a server that is accessible to all users. (In this case, a IFC TranslatorList.xml file is created, which is a list of references to these translators.) You can also create local translators that you want to install on the hard disk of each user.
- 6) Quit ArchiCAD.
- 7) Create a new folder entitled “Defaults”. Following the hierarchy below, copy the following files/folders into the “Defaults” folder:

Defaults

ArchiCAD (folder containing Work Environments and Templates)

WorkEnvironment (folder containing WorkEnvironment files)

Template file(s) (extension .tpl)

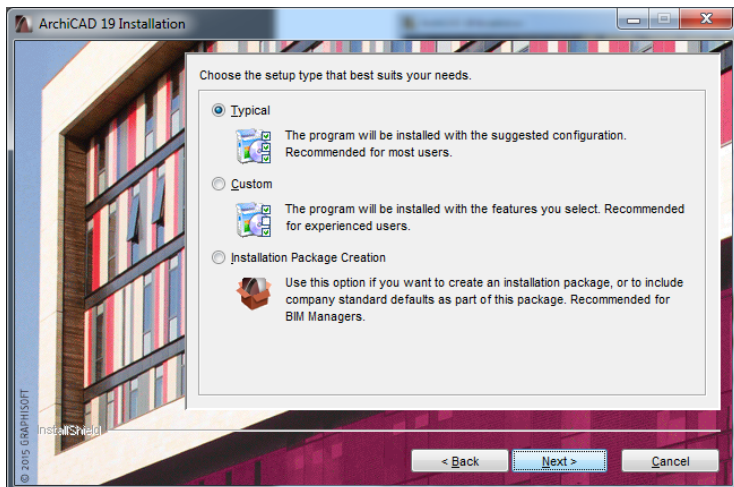
Dxf-Dwg Translator List.Xml

Dxf-Dwg Translators (folder containing Dxf-Dwg translators)
IFC Translator List.Xml

IFC Translators (folder containing IFC translators)

- 8) Uninstall ArchiCAD from your machine before running the Installer again. Alternatively, run ArchiCAD Installer on the server or on another machine.

- 9) When you get to Choose Setup Type, choose the **Installation Package Creation** option. The screens of the Installation Wizard will now show the message “Recorded Installation.”



- 10) Proceed through the screens of the Installation Wizard and set options for the content of the recorded installation package.

Feature (Component) Selection

Choose the components you wish to install.

Company Standards Defaults

Use the controls of this screen if you wish to include company standard components as part of the install package.

Note for Educational Institutions: If you are using the Installation Package Creation process to create a recorded installation that does not include customized settings, do *not* check the box on this screen. Your recorded installation process will then skip to the end of the process.

Check the **Install company standard defaults** box.

Use the directory dialog box to indicate the path of the **Defaults** folder on your system which contains previously defined company standard content. The folder and its contents should take the form defined in Step 7 above. The program will check to ensure that the Defaults folder indeed contains default content. (If it does not, you will see a warning notice.)

ArchiCAD Work Environment Selection

Use the pop-up menu to define which Work Environment profiles should be included in the install package:

- ArchiCAD Factory Default Profile Set; or
- Predefined Company Standard Profile Set.

The selected profiles (referred to in a single .xml file) will be copied to each end user's machine.

Note: The Work Environment Selection screen will appear only if:

- the components to be installed include ArchiCAD; and
- you have activated the **Install company standard defaults** checkbox; and
- the defined Defaults folder includes a WorkEnvironment subfolder.

DXF-DWG Translator List

Use this screen to specify the path of the translator list you want to include as part of the install package.

If you have defined company standard translators and have placed the resulting DXF-DWG Translator List.xml in the defined Defaults folder, check **Install Predefined List of Translators**. The paths of the translator files are displayed on the screen.

After the package is installed on the end users' machines, the users will have access to read-only templates of these referred translators (which are located on a server). To edit them, the users should create editable copies by duplicating them in DXF-DWG Translation Settings.

If you want to use ArchiCAD's factory default translators, do not check the "Install company standard defaults" box.

Note: This screen will appear only if:

- the components to be installed include ArchiCAD; and
- you have activated the **Install company standard defaults** checkbox; and
- the defined Defaults folder includes a file called DXF-DWG TranslatorList.xml.

Local DXF-DWG Translators

If you have defined company standard DXF-DWG Translators which you want to install on each end user's machine, check **Install Company Standard Translator(s)**. The names of these translators are shown in the box below.

When the package is installed on the end users' machines, and when the program is first started, these translators will be copied to each end user's machine.

Note: This panel will appear only if:

- the components to be installed include ArchiCAD; and
- you have activated the **Install company standard defaults** checkbox; and
- the defined Defaults folder includes at least one file called DXF-DWG Translator.xml.

IFC Translator List

Use this screen to specify the path of the IFC translator list you want to include as part of the install package.

If you have defined company standard translators and have placed the resulting Translator List.xml in the defined Defaults folder, check **Install Predefined List of Translators**. The paths of the translator files are displayed on the screen.

After the package is installed on the end users' machines, the users will have access to read-only templates of these referred translators (which are located on a server). To edit them, the users should create editable copies by duplicating them in IFC Translation Settings.

If you want to use ArchiCAD's factory default translators, do not check the "Install company standard defaults" box.

Note: This screen will appear only if:

- the components to be installed include ArchiCAD; and
- you have activated the **Install company standard defaults** checkbox; and
- the defined Defaults folder includes a file called IFC TranslatorList.xml.

Local IFC Translators

If you have defined company standard IFC Translators which you want to install on each end user's machine, check Install Company Standard Translator(s). The names of these translators are listed.

When the package is installed on the end users' machines, and when the program is first started, these translators will be copied to each end user's machine.

Note: This panel will appear only if:

- the components to be installed include ArchiCAD; and
- you have activated the **Install company standard defaults** checkbox; and
- the defined Defaults folder includes at least one file called IFC Translator.xml.

Template Projects

If you have defined company standard Templates which you want to install on each end user's machine, check **Install Company Standard Template(s)**. The template files that you have copied to the Defaults folder are listed.

Upon installation on the end users' machines, and when the program is first started, these templates will be copied to each end user's machine. When creating a new project in ArchiCAD with the "Use a Template" option, end users will find these company standard templates listed in the pop-up, together with other, recently used template files.

Note: This screen will appear only if:

- the components to be installed include ArchiCAD; and
- you have activated the **Install company standard defaults** checkbox; and
- the defined Defaults folder includes at least one Template file.

Complete Recorded Installation

After viewing a summary of your installation choices, click the Install button on the screen to initiate the recorded installation.

On the next screens, three additional options will be added to the recorded installation, and will be carried out on each end user's machine.

- if the installer detects customized Work Environment Profiles from earlier ArchiCAD versions (9 through 18) on the end user's machine, decide whether these should be imported to ArchiCAD 19 or not;
- decide whether an "ArchiCAD 19" desktop shortcut should be created on the desktop;
- decide whether the end user's system should reboot automatically following the installation.

Finally, define the path to which the recorded file - an executable application - should be saved.

You have now created an installation package. When users launch this .exe application on Windows, or "ArchiCAD Installer" on Mac, on the server, the usual queries posed by the Installation Wizard are skipped; the installation begins immediately. The installed copy of ArchiCAD will have the previously defined default settings.

Using a CodeMeter Server

If you would like to use network licenses (e.g. instead of single licenses), you will need a CodeMeter hardware key or software key. Contact your local GRAPHISOFT partner to order one or to exchange your existing single key(s).

Single or Network Keys

A so-called **single key** can hold one license for each GRAPHISOFT product (ArchiCAD, MEP, EcoDesigner Star, BIMx) and can be used locally. You connect the hardware key to your computer's USB port or download the software key with License Manager Tool (LMT); if you have the CodeMeter driver installed (it is installed with ArchiCAD), your GRAPHISOFT product will find a license and will run in commercial mode. Each workstation in an office needs to have an individual key.

A **network key** can hold multiple licenses related to each product (ArchiCAD, MEP, EcoDesigner Star, BIMx). To share them across multiple computers you need a CodeMeter server. This arrangement provides more flexibility than having individual keys, as the licenses are allocated only when they are being used on one of the clients.

System Requirements for a CodeMeter Server

The CodeMeter server is part of the CodeMeter driver, so you only need to select a computer on your network that will act as a CodeMeter server. To set up a CodeMeter server as a network license server, you will need the following:

- A computer with network connection (should be running during work hours).
- The computer must have at least one free USB port, for hardware key only.

- CodeMeter driver must be installed. Click on **Tools and Utilities** from the start-up screen, or browse your DVD directory for the CODEMETER folder.

Note: There is no need for a server-level operating system for the CodeMeter server. You can use one of the workstations as a CodeMeter server, and you must keep it running during work hours. Any computer that has recent Windows or OS X versions can be used (Windows 7, Window 8, Windows 8.1, OS X 10.8, 10.9, 10.10).

Set Up the Server

After you have your server running and the CodeMeter driver is installed, start the server as described below. All CodeMeter settings can be managed in CodeMeter WebAdmin. To start it:

- Open CodeMeter Center (from Applications or using the Start menu) and click on WebAdmin;
- or simply open localhost:22350 on your browser.

To enable the CodeMeter server:

- 1) Go to Configuration/Server tab.
- 2) Check Run Network Server checkbox.
- 3) Do not forget to **Apply the changes**.

From that point, the server runs and shares licenses on the local network.

- Check **Run CmWAN Server** checkbox to use the computer in a wide area network (WAN) and allow license accesses.
- Do not forget to **Apply the changes**.

Client Side Settings

All clients on the local network should find the server automatically. In case this does not work (e.g. your server is in a different subnet, or you are connecting remotely through the Internet), then you may need to specify the server's hostname IP address. On the client:

- 1) Open WebAdmin.
- 2) Configuration/Network.
- 3) Add the server to the Server Search List.

This field can have multiple entries; the client searches for available licenses in the specified order and only on the specified servers. Only when the list is empty does the client search for other available servers.

Access Control

With the default settings, all computers on the same local network (same subnet) can use a license from the server.

To restrict access:

- 1) Open WebAdmin.
- 2) Go to Configuration/Access Control.

If the Clients' list is empty, anyone on the local network can use a license. If at least one entry is listed here, only the listed entries can request a license.

Note: If the server is public on the Internet, or no one is allowed to use a license, make sure that this list is filled out correctly to avoid unwanted license usage.

You may want to check who is using a license:

- 1) Open WebAdmin on the server computer.
- 2) Go to Server/User tab.

Here you can see a list of active clients and clients who have borrowed licenses.

Set Up License Borrowing

If your network key has a license borrowing product, the clients can borrow a license.

For more information on License Borrowing, see <http://helpcenter.graphisoft.com/?p=25723>.

IMPORTANT NOTE: Make sure all licenses are returned/expired before you do any of the following:

- Upgrade the licenses on upgrade site.
- Install a new main version of ArchiCAD.
- Unplug the server CodeMeter key from the computer or transfer it to a different one (even one with the same network specification).
- Uninstall or reinstall the CodeMeter driver (updating it is fine).
- Re-install the Operating system.
- Change the IP address of the server computer.

There is no additional setting needed to enable license borrowing but you may customize the following settings.

Borrow Duration

By default the borrowed licenses are valid for 30 days. If the license is not returned within this period, the license will expire and will be automatically returned to the server. To customize this maximum time (up to 30 days):

- 1) Open WebAdmin.
- 2) Go to Configuration/Borrowing.
- 3) Set the preferred Maximum Borrow Duration, in minutes.

Maximum Number of Borrowable Licenses

You can also maximize the number of licenses available for borrowing. Enter the preferred number in the 'Maximum Borrow Quantity' field. This value cannot exceed the available license quantity of the borrowing product. Visit

<http://www.graphisoft.com/downloads/licensing/>

to list the number of licenses you have and check the quantity of the LBRK (for keyplug based borrowing) or LBRA (for file based license borrowing) products.

Server Identification

Each client identifies the server by either host name or IP address. This can be customized on the server level, so when the server issues the license, the client gets the chosen address and will try to return the license to the given address. On networks with reliable DNS settings, Server name identification is the best choice, but on networks without it, or in mixed platform environment (Mac & Windows), choose identification based on IP addresses. In that case it is important to use static IP address for the Server.

Note: To customize all of these settings (Borrowing settings and Server Identification), check the Overwrite Entry Settings box in the License Borrowing interface of the WebAdmin.

It is strongly recommended to test the borrow environment. Set a relatively short Borrow Duration and you can test your setup without risking the loss of a license for a long period.

Add/Repair (Reinstalling ArchiCAD)

If you already have ArchiCAD installed, and start the **Installation Wizard**, you are provided with two options:

- 1) **Add** will add new features to your current installation. You will see all available features in a list and you can check features to be added to your current installation.
- 2) **Repair** will reinstall ArchiCAD with the features of your current installation. You can choose to save your preferred files in a backup folder. If you select this option, a “backup” folder will be created in your ArchiCAD 19 folder. The name of the backup folder will contain the ArchiCAD version and the date of creation; and will include:
 - your previous Add-on settings;
 - your previous ArchiCAD 19 Library;
 - your previous default Work Environment schemes.

After the repair process is complete, you can either delete these preferred files or reuse them by copying them back into your repaired ArchiCAD environment:

- copy your Add-On settings back to the respective sub-folders of your ‘ArchiCAD 19/Add-Ons’ folder;
- replace the library in the ‘ArchiCAD 19/ArchiCAD Library 19’ folder;
- replace your ‘Defaults’ folder in the ‘ArchiCAD 19’ folder (thereby including your current Work Environment, Translator and Template data).

Project files you saved into the ArchiCAD 19 folder will not be deleted or overwritten by the repair process.

Uninstall ArchiCAD

To uninstall ArchiCAD 19 from Windows, it is best to use the “Add or Remove Programs” utility, accessible from the Control Panel.

On Mac, navigate to the “Uninstall.AC” folder in your ArchiCAD 19 folder, and select the “Uninstall.app” application. The **Uninstall Wizard** will help remove files which were installed by the ArchiCAD Installation Wizard. If you have more than one ArchiCAD installed, you may want to leave the CodeMeter and associated components installed on your system. If your driver(s) were installed in the course of installing ArchiCAD 19, the uninstaller includes a checkbox option: **Remove hardware license driver(s)**. Make sure this option is unchecked if you do not want to remove your driver(s). The uninstaller doesn’t remove any files you have created in the ArchiCAD main folder - e.g. ArchiCAD project files that you saved into the ArchiCAD main folder.

Important: Do not remove the Java Runtime Environment before uninstalling ArchiCAD.

Silent Uninstall

For both Windows and Mac, a silent mode is available for uninstalling ArchiCAD. Use this mode to run the uninstall process from beginning to end without any further user input.

On Windows: open the “Run” window from the Start menu. In Windows Explorer, navigate to the Uninstall.AC folder in the ArchiCAD folder. Drag uninstaller.exe into the command line; the path is copied to the command line.

Type the following after the path:

/silent

e.g.:

C:\Program

Files\GRAPHISOFT\ArchiCAD 19\Uninstall.AC\uninstaller.exe /
silent

Note: If you want to avoid automatically restarting the computer after a silent uninstall, add the following to the end of the path:

/norestart

For example:

C:\Program

Files\GRAPHISOFT\ArchiCAD 19\Uninstall.AC\uninstaller.exe /
silent /norestart

On Mac: open Terminal window, navigate to the Uninstall folder in the ArchiCAD install folder, then type:

uninstaller.app/Contents/MacOS/uninstaller -silent

e.g.: /Volumes/MyFolder/MySubfolder/ArchiCAD 19/
Uninstall.AC/uninstaller.app/Contents/MacOS/uninstaller -silent

Note: If you want to avoid automatically restarting the computer after a silent uninstall, add the following to the end of the path:

-norestart

For example:

/Volumes/MyFolder/MySubfolder/ArchiCAD 19/Uninstall.AC/
uninstaller.app/Contents/MacOS/uninstaller -silent -norestart

BIM Server for ArchiCAD 19

An ArchiCAD client can access only those Teamwork projects which are located on a BIM Server of the same version number as the ArchiCAD client.

If the ArchiCAD client's version number is different from the BIM Server version number, communication can take place only after you install a BIM Server of the same version number as the ArchiCAD client.

See also [“Migrating the BIM Server” on page 35.](#)

Hardware/Software Requirements

Recommended Operating Systems for BIM Server

- Windows 8.1 (64-bit version)
- Windows 8 (64-bit version)
- Windows 7 (64-bit version)
- Windows Server 2012 R2
- Windows Server 2012
- Mac OS X 10.10 Yosemite
- Mac OS X 10.9 Mavericks

Notes on Older Systems

- Mac OS X 10.8 Mountain Lion is compatible but not tested by GRAPHISOFT.
- Mac OS X 10.6 Snow Leopard and Mac OS X 10.7 Lion are not compatible (BIM Server cannot be installed).
- Windows Server 2008 R2 is compatible but not tested by GRAPHISOFT.

- Windows Vista is not compatible (BIM Server cannot be installed).
- Windows XP is not compatible (BIM Server cannot be installed).

Recommended Hardware

- Processor: 64-bit processor with four or more cores.
- RAM: 8 GB or more is recommended. For servers having a high number of active users and projects, consider 16 GB or more RAM.
- Hard disk space: 5 GB free disk space is required for the installation, 10 GB or more is required per active project.

Minimum Hardware

- Processor: 64-bit processor with two cores.
- RAM: 4 GB.
- Hard disk space: 5 GB or more is required for the installation.

Other Software

- Java 8 or later is required. You can find details here: <http://www.graphisoft.com/Java>.
- Your network has to accommodate HTTP 1.1 standard.
- Supported browsers:
 - Google Chrome (26 or newer)
 - Internet Explorer (10 or newer)
 - Safari (5.1 or newer)
 - Firefox (20 or newer)

Migrating the BIM Server

BIM Server for ArchiCAD 19 is a completely new installation, it cannot be installed as an additional module to a version 18 (or earlier) BIM Server. (You can install it on the same computer, but it must be managed separately with its own BIM Server Manager application or browser based interface.)

Migrating BIM Server Data from ArchiCAD 18

Use the Export and Import functions of BIM Server Manager (Users and Roles pages) to transfer user/ role data from BIM Server 18 to the newly installed BIM Server.

Migrating BIM Server Data from ArchiCAD 17 and Earlier

The technology behind BIM Server for ArchiCAD 18 and later is fundamentally different from that of previous versions (ArchiCAD 17 and before), and you cannot migrate your BIM Server data (e.g. users or roles) from earlier server versions.

Install the new BIM Server and proceed to define users and roles as needed.

Installation of BIM Server

Start installation by clicking **Install GRAPHISOFT BIM Server** from the start-up menu of the ArchiCAD DVD.

Important: A computer can run only one single BIM Server (of version 19 or later). If you wish to start another BIM Server (of version 19 or later), then it must be installed on a separate computer.

Program Folder Selection

After accepting the license agreement, you must define a location on your computer's hard drive for installing the BIM Server.

Start Menu Location (Windows 7 Only)

Define the Program Folder (default folder: GRAPHISOFT) in which to place the following shortcut commands:

- BIM Server Manager;
- Reconfigure BS Manager;
- Reconfigure BS Module;
- GRAPHISOFT BIMcloud/BIM Server Reference Guide.

Installation Process

After viewing the summary of your installation choices, click **Install** to begin the installation process.

Click **Next** to proceed through the wizard.

Configure BIM Server

The BIM Server configuration process takes place after the installation. It involves the configuration of two components: BIM Server Manager and BIM Server Module.

Page 1: BIM Server Manager Configuration

Configure BIM Server Manager

BIM Server Manager's basic settings

Enter a display name for your server

Display name: - BIM Server

Display name is used in ArchiCAD's server popups to easily identify your server, independent of the currently used address (which can be different for every user)

Select a communication port:

Port:

ArchiCAD and the BIM Server Manager will use the above port to connect to your server. Usage: http://example.com:18008

Create a password for the built-in "masteradmin" user:

Password:

Verify:

Log in using the "masteradmin" login name and the above password to troubleshoot a server.

Data Folder

Free Space on C: 61.82 GB

- **Display name:** By default, the BIM Server will use the name of your computer. All server pop-ups will identify the BIM Server by this name (regardless of the address used to access it).
- **Port:** Select a free port, or use the "Find an available port" command to automatically find one.
- **Master Administrator password:** Create a secure password for the Master Administrator (masteradmin) user. This Master Administrator will always be able to log in to the BIM

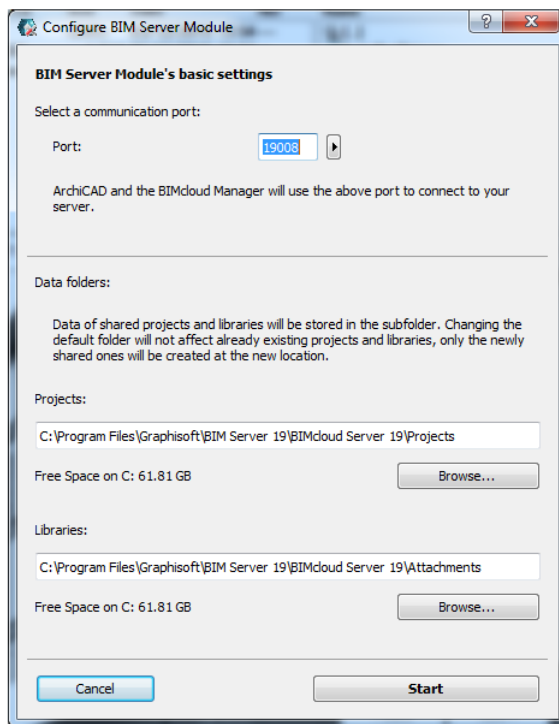
Server with full access to all hosted data. In case you forget the password, you must reconfigure your BIM Server and enter a new password.

- **Data folder:** This is the BIM Server Manager's data storage folder.

Note: Projects will be stored in a different folder - as defined in the next step.

Click **Next**.

Page 2: BIM Server Module Configuration



Port: Select a free port or use the “Find an available port” command to automatically find one.

Name: Name of your Module.

Project data folder: Enter or Browse the location of the default Project Data Folder. This will be the location of Teamwork Projects on this BIM Server.

Library data folder: Enter or Browse the location of the default Library Data Folder. This will be the location of Teamwork Libraries on this BIM Server. Click **Start**.

Page 3: Continue the Configuration in a Browser

Page 4: Log In to BIM Server

Enter the Master Administrator password to Log in to the BIM Server.

Page 5: Create the First User

Enter data for the first user. This user will be the first Server Administrator on the BIM Server. Fill in all the fields:

- Login name;
- Password, Verify password;
- Full Name;
- Email address.

Page 6: Set Up Mail Server

Use these fields to define the mail server which will to send information by email from the BIM Server to the users. The mail server definition can be modified later in the browser-based BIM Server Manager interface.

Note: Using a mail server is optional. However, if you don't define a mail server here, you won't be able to send emails (e.g. password reminders) to users from the BIM Server.

Click **Continue** to finalize configuration.

Page 7: Complete Installation

It is recommended to log out now as the Master Administrator, and then log in as the newly created user. It is not recommended to use the Master Administrator account for everyday tasks.

Uninstall BIM Server

To uninstall the GRAPHISOFT BIM Server, you can use the Uninstall BIM Server shortcut located in the BIM Server's installation folder. Double-click this shortcut to begin the uninstall process.

Within the uninstaller, you can choose whether to:

- Completely uninstall the BIM Server (removes the program with the option to remove all user data as well).
- Uninstall BIM Server Manager only (Use this option if you wish to connect your BIM Server to an existing BIMcloud).

To uninstall the GRAPHISOFT BIM Server from Windows, it is best to use the "Add or Remove Programs" or "Programs and Features" utility, accessible from the Control Panel.

Uninstall BIM Server Completely

Removes all components from your computer; option to also remove all data (users and projects).

Uninstall BIM Server Manager Only

This will remove only the BIM Server Manager component, leaving the BIM Server Module intact. This will keep your projects intact.

You will be able to pair this BIM Server Module with an existing BIMcloud by turning it into a BIMcloud Server.

See [BIMcloud and BIM Server User Guide](#).

Licensing and Activation of BIM Server

The BIM Server does not require a separate license, but it must be activated before its use.

Once you have installed and started the BIM Server, the BIM Server Manager interface will prompt you to activate it. This activation is free, one time only, and requires a GRAPHISOFT ID. If you do not have a GRAPHISOFT ID, the Activation process will help you to create one.

Upgrade BIM Server to BIMcloud

If you would like to extend your BIM Server, or if you would like to connect multiple BIM Servers under the same Management interface, you can upgrade the BIM Server to a BIMcloud.

This upgrade process requires a purchased BIMcloud license.

The upgrade process is not reversible; it is not possible to downgrade a BIMcloud to a BIM Server.

See [Upgrade a BIM Server in the BIMcloud and BIM Server User Guide](#).

Tools and Utilities

The following utilities are automatically installed on your computer together with ArchiCAD. However, it is possible to install them manually, if necessary, using the standalone installation packages available in the “Tools and Utilities” menu of the ArchiCAD 19 DVD.

Java runtime environment	Java 8 or newer is necessary to run ArchiCAD 19 and BIM Server installer/uninstaller. On Mac, Java comes with the operating system. On Windows, the ArchiCAD 19 or BIM Server installer will detect your Java environment and will install Java if needed.
CodeMeter system components	A Protection Key driver (CodeMeter) will be installed as part of the installation process for ArchiCAD 19.
Adobe Reader	Adobe Reader is necessary to read the PDF documentation provided in the ArchiCAD 19/ Documentation folder. If needed, you can install this program by inserting the ArchiCAD 19 DVD and selecting the application from “Tools and Utilities”; or browse the DVD contents to locate the Adobe Reader application.

The following utilities are also installed with ArchiCAD 19. If you prefer not to install them, use Custom Installation and uncheck these options.

Plotter Drivers	With a typical install, ArchiCAD 19 will include a number of built-in drivers for a wide variety of HPGL compatible plotters.
GRAPHISOFT Shell Extension	Optional, for Windows only. Utility for extended GRAPHISOFT file property information on Windows.
Documentation	PDF files offering help on using ArchiCAD and related functions.
ArchiCAD Help	Context-sensitive electronic Help files for ArchiCAD.

For more information about additional utilities, open the folders of the applications in the ArchiCAD main folder to find detailed descriptions.

Updates

For ArchiCAD and ArchiCAD Library

To check for available updates of your localized version of ArchiCAD or ArchiCAD libraries, start ArchiCAD 19 and go to the **Help** menu:

The **Check for Updates** command will open your Internet browser and will guide you to the GRAPHISOFT update website. If there is no new update patch (hotfix) available for your release and language version of ArchiCAD, the web page will inform you that you are using an up-to-date version of ArchiCAD. If there is a new update patch available, the web page will automatically offer you the updater package that fits your current ArchiCAD installation.

You can choose to run the Check for Updates function automatically on a regular basis by setting the options at **Options > Work Environment > Network and Update**.

Note: If you have an updater patch installed and use the **Add/Repair** function of your original ArchiCAD 19 Installer DVD, you will be prompted to re-apply the updates after the modification or repair is carried out. The ArchiCAD update option is available to holders of the Commercial or Education ArchiCAD 19 license.

You can find other downloadable materials (example files, goodies etc.) at

www.graphisoft.com/support/archicad/downloads.

For BIM Server

BIM Server updates may be available from time to time at the GRAPHISOFT update website:

<http://www.graphisoft.com/downloads/archicad/updates>.

Compatibility Information

We suggest that you use previous versions of ArchiCAD to work on your current projects, until you feel comfortable and productive with the new version. We recommend that you keep your existing ArchiCAD environment for a time, even if you are using ArchiCAD 19.

ArchiCAD 19 provides downward compatibility to ArchiCAD 18 with limitations: all information based on the new features and functions of ArchiCAD 19 will be lost in a file saved in ArchiCAD 18 format.

Note: When back-saving your ArchiCAD 19 project to version 18, any library parts that were earlier migrated from 18 and revised for 19 will be automatically replaced by their original counterparts in version 18.

When migrating earlier version files to ArchiCAD 19, you should use automatic Migrate Libraries option to ensure compatibility of library objects.

For more information, see the Migration Guide in ArchiCAD Help.

Opening ArchiCAD Files

ArchiCAD 19 can open ArchiCAD project files from earlier versions beginning with 8.1.

You cannot open project files from earlier versions directly in ArchiCAD 19. Please use ArchiCAD 8.1 or later version to convert them to a usable file format. We strongly recommend that you create an archive file (.pla) of each project you worked on with older ArchiCAD versions. Move a project onto ArchiCAD 19 only if you have archived it with the previous version.

See also the Migration Guide in ArchiCAD Help.

Saving Project Files

ArchiCAD 19 can back-save project files in ArchiCAD 18 format only (among previous ArchiCAD file formats).

Plotter and Digitizer Support

Pen plotters (or pen-plotter mode on raster plotters) are not supported beginning with version ArchiCAD 8.1. Users who wish to use a pen plotter should keep an earlier ArchiCAD version. ArchiCAD 19 does not support earlier GRAPHISOFT digitizer drivers; however, manufacturers' digitizer drivers work fine in the new ArchiCAD version in mouse-mode for sketches.

Notes

